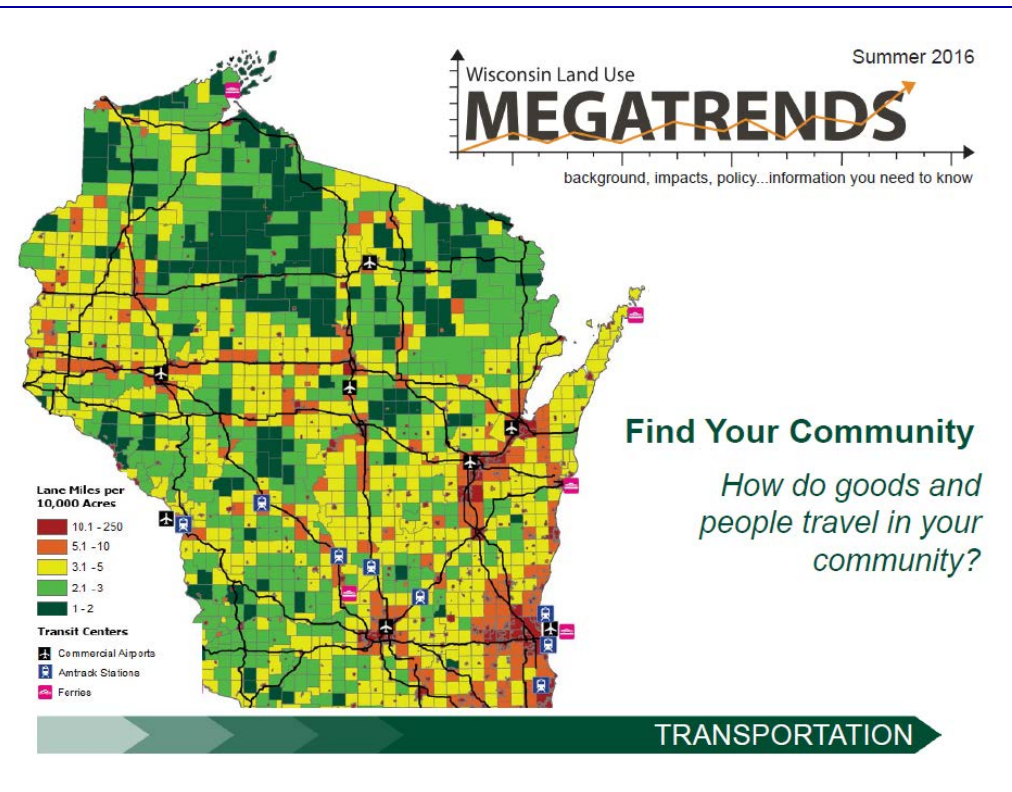


Center for Land Use Education



- Zoning leadership - January 2017
- Transportation Megatrends - road salt
- Other CLUE work
- Publications



Center for Land Use Education
College of Natural Resources
University of Wisconsin-Stevens Point

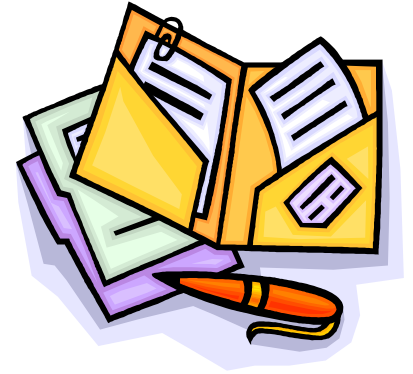
UW
Extension
University of Wisconsin-Extension

WCCA
Fall 2016

Lynn Markham
Center for Land Use Education

Workshop for local land use officials

- Wednesday, November 9, evening
- Ashland, WI
- Focus on:
 - Comprehensive planning
 - Zoning
 - Development review
 - Open meetings & hearings



Zoning board workshops
available upon request

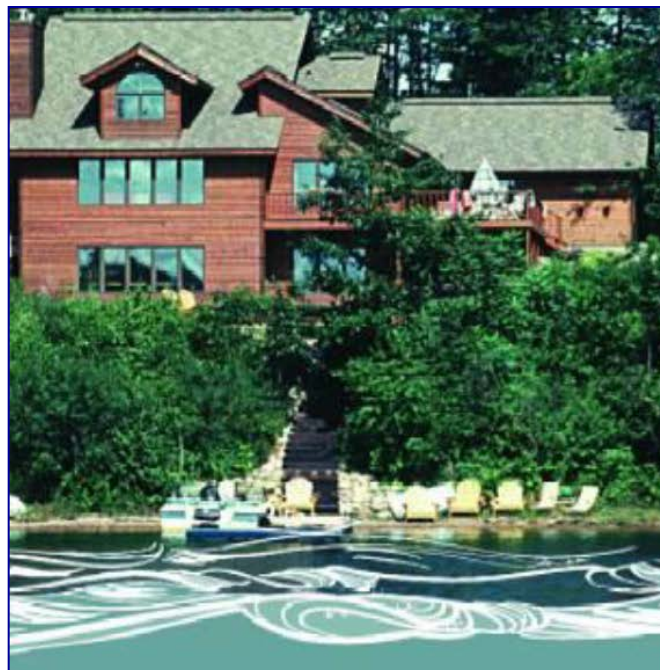
Zoning leadership

- January 9-10
- Amherst Junction



Shoreland zoning

- 3-part video about changes clicked on over 2900 times
- Feedback about future videos? Helpful? Length? Video?
- Videos v. print publications?



Protecting lakes through a partnership between citizens, lake associations, county zoning staff, county boards, DNR, UW-Extension and more

Shoreland Zoning Update – Part 1

May 2016

Lynn Markham



Center for Land Use Education
College of Natural Resources
University of Wisconsin-Stevens Point

UW
Extension
University of Wisconsin-Extension

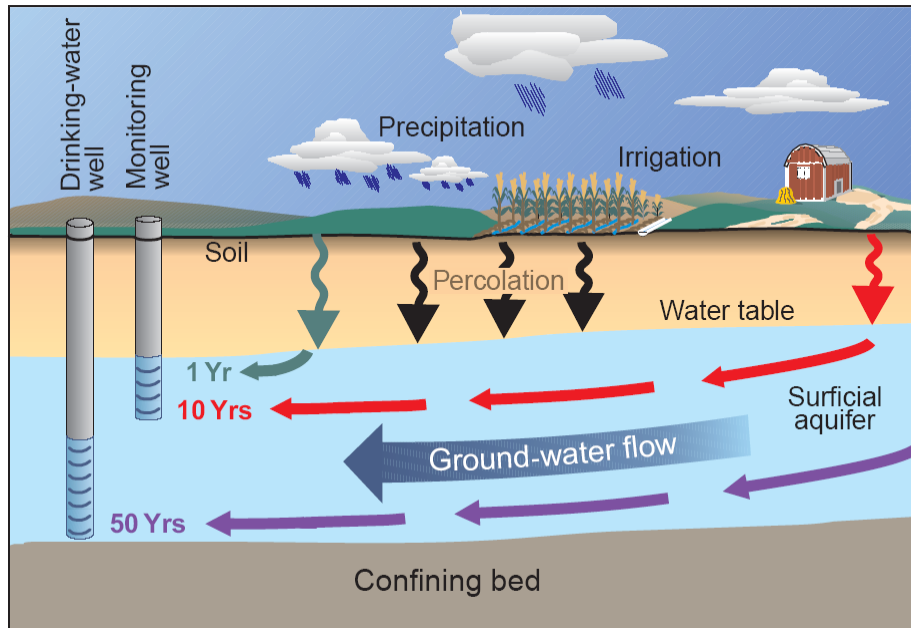
Other CLUE work

- Anna Haines doing the zoning game where players have to decide where to put their land use cards on a community map to learn about land use compatibility
 - Wood County Leadership - October 20
- Anna teaching Land Use Implementation Tools with a big focus on zoning

Other CLUE work

- Shiba Kar facilitated workshop on developing a climate adaptation plan for the Forest County Potawatomi
 - Willing to do more workshops on this topic
- Presentations on energy efficiency to local communities

Options for protecting groundwater



WI Land + Water Conference

March 16, 2017

Case studies from 3 WI communities

1. Adopt wellhead protection ordinances
2. Purchase land or obtain easements for lands in wellhead protection areas
3. Identify and properly seal unused wells
4. Provide educational programs for private well owners
5. Encourage farmers to adopt nutrient management planning, integrated pest management, rotational grazing or organic practices
6. Cropping agreements to reduce chemical inputs to groundwater
7. Encourage water conservation for businesses and residents on municipal water systems
8. Consider septic system locations relative to wells in subdivisions

2016 Wisconsin Lakes Partnership Convention

April 5-7 Stevens Point Holiday Inn Convention Center

Wednesday: Half and Full Day Workshops (~\$20 each)

Thursday: Wallace J. Nichols Keynote Presentation, 30+ break out sessions (~\$80)

Friday: More “accessible” topics on the agenda, afternoon workshops (~\$50)

WALLACE J. NICHOLS, PhD

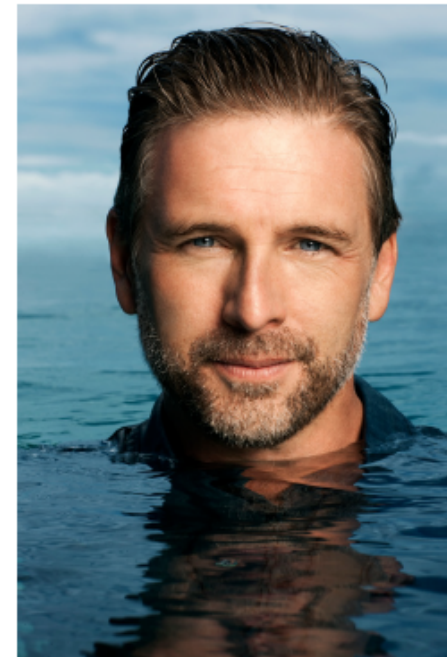
FOREWORD BY CELINE COUSTEAU

BLUE MIND

The Surprising Science That Shows
How Being Near, In, On, or Under Water
Can Make You Happier, Healthier,
More Connected, and Better at What You Do

“Minding” our Waters

Join us as we “go deep” into the many ways that our brains and our waterways intersect. Learn about the exciting new field of neuro-conservation. Take a cerebral perspective on watershed planning and management. Get in touch with your “Blue Mind” and hear about successful efforts to demonstrate the connections between healthy waters and human well-being.

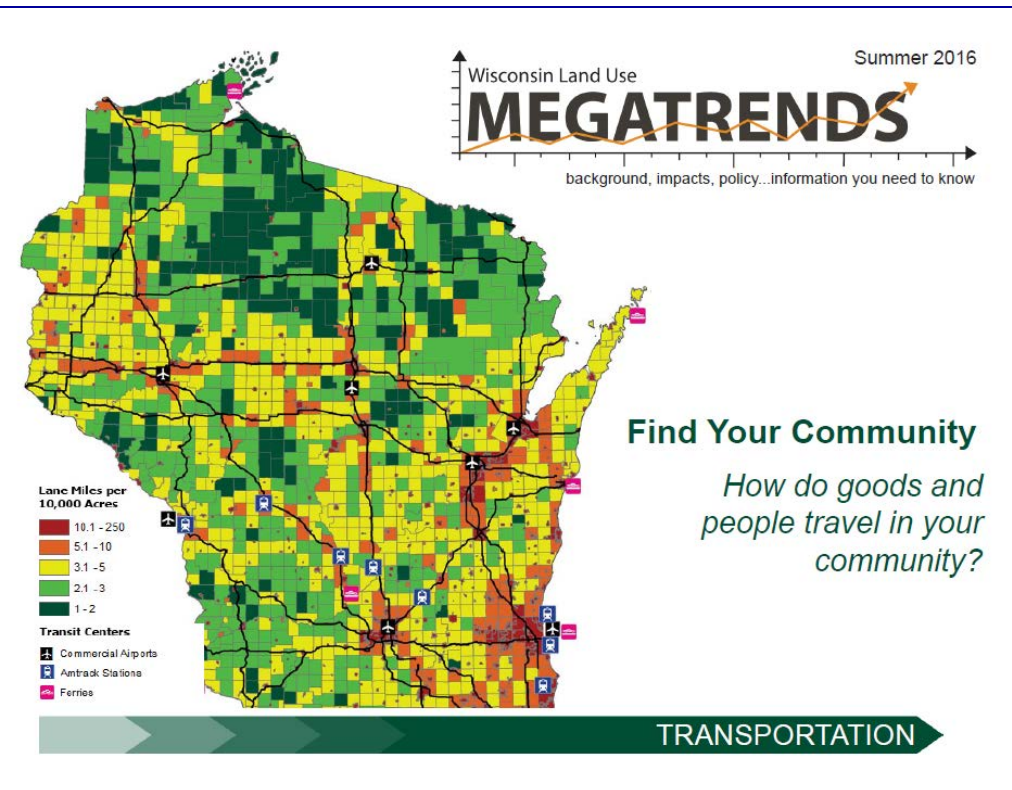


Publications

Wis Land Use Megatrends

Transportation Fall 2016

- Infrastructure
- Economics @ local level
- Human & environmental health
- Social
- Emerging Trends
- Land use planning/policy



Wis Land Use Megatrends

Figure HE3

Average winter chloride concentrations in Wisconsin

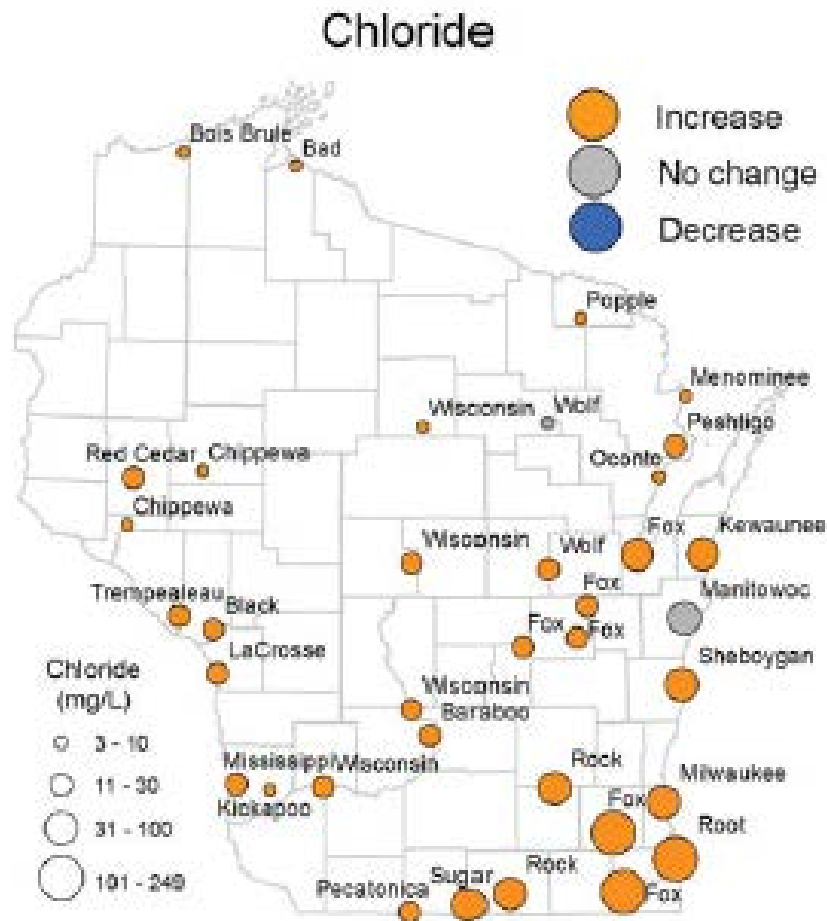
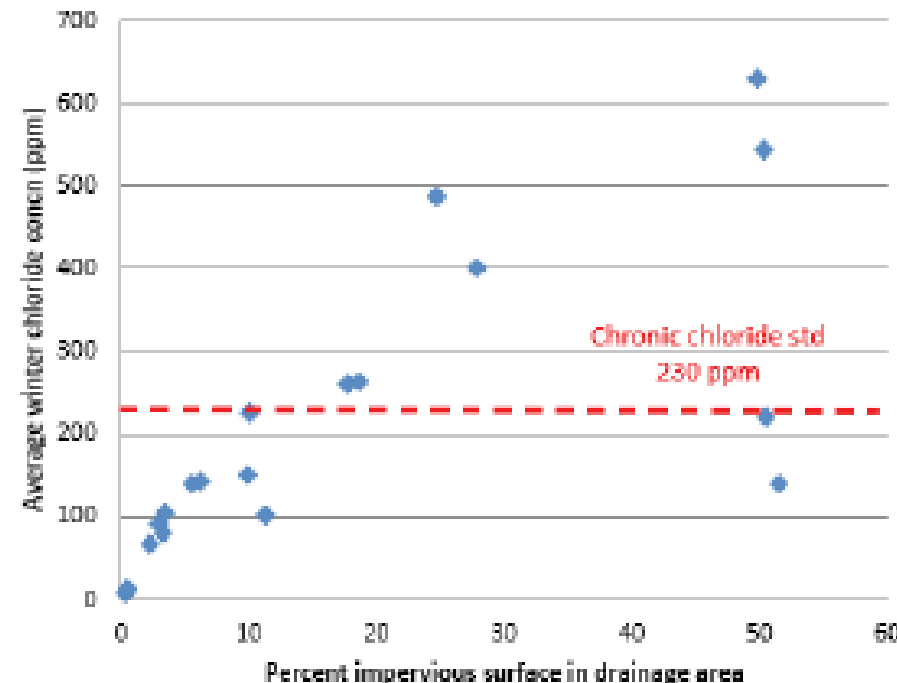


Figure HE2

Average winter chloride concentrations in Wisconsin streams

Average winter chloride concentrations in Wisconsin streams



County	Waterbody	Maximum chloride concentration (ppm)
Columbia	Yahara River	591
Dane	Starkweather Creek	2570
Dane	Pheasant Branch	1450
Dane	Yahara River	591
Dane	Unnamed Creek	2250
Dunn	Unnamed Creek	1550
Dunn	Unnamed Creek	1530
Eau Claire	Little Niagara Creek	610
Kenosha	Pike Creek	3473
Kenosha	Pike River	1016
Marinette	South Fork Thunder River	630
Milwaukee	Kinnickinnic River	4890
Milwaukee	Lincoln Creek	2730
Milwaukee	Little Menomonee River	4190
Milwaukee	Oak Creek	1480
Milwaukee	Root River	4130
Oconto	South Fork Thunder River	630
Outagamie	Garners Creek	516
Outagamie	Mud Creek	1120
Ozaukee	Little Menomonee River	4190
Ozaukee	Unnamed Creek	3030
Racine	Root River	4130
Racine	Unnamed Creek	427
Waukesha	Root River	4130
Waukesha	Unnamed Creek	739

Rivers that exceed
WI Cl⁻ standards
-395 ppm (chronic)
-797 ppm (acute)



**Available TODAY
& on UWEX Lakes
online bookstore**

**For ages 5 and up
Hardcover. 30 pages
\$8**