

# CLUE Update

Lynn Markham  
Land Use Specialist  
WCCA, Oct 2023



Center for Land Use Education  
College of Natural Resources  
University of Wisconsin - Stevens Point



Extension  
UNIVERSITY OF WISCONSIN-MADISON

# Upcoming workshops

## Zoning board workshops

- November 1- Dunn County with conditional use hearing role play starring Buck Malick and Ellen Denzer
- November 14- Sawyer County
- January - Portage County
- Webinar in January??

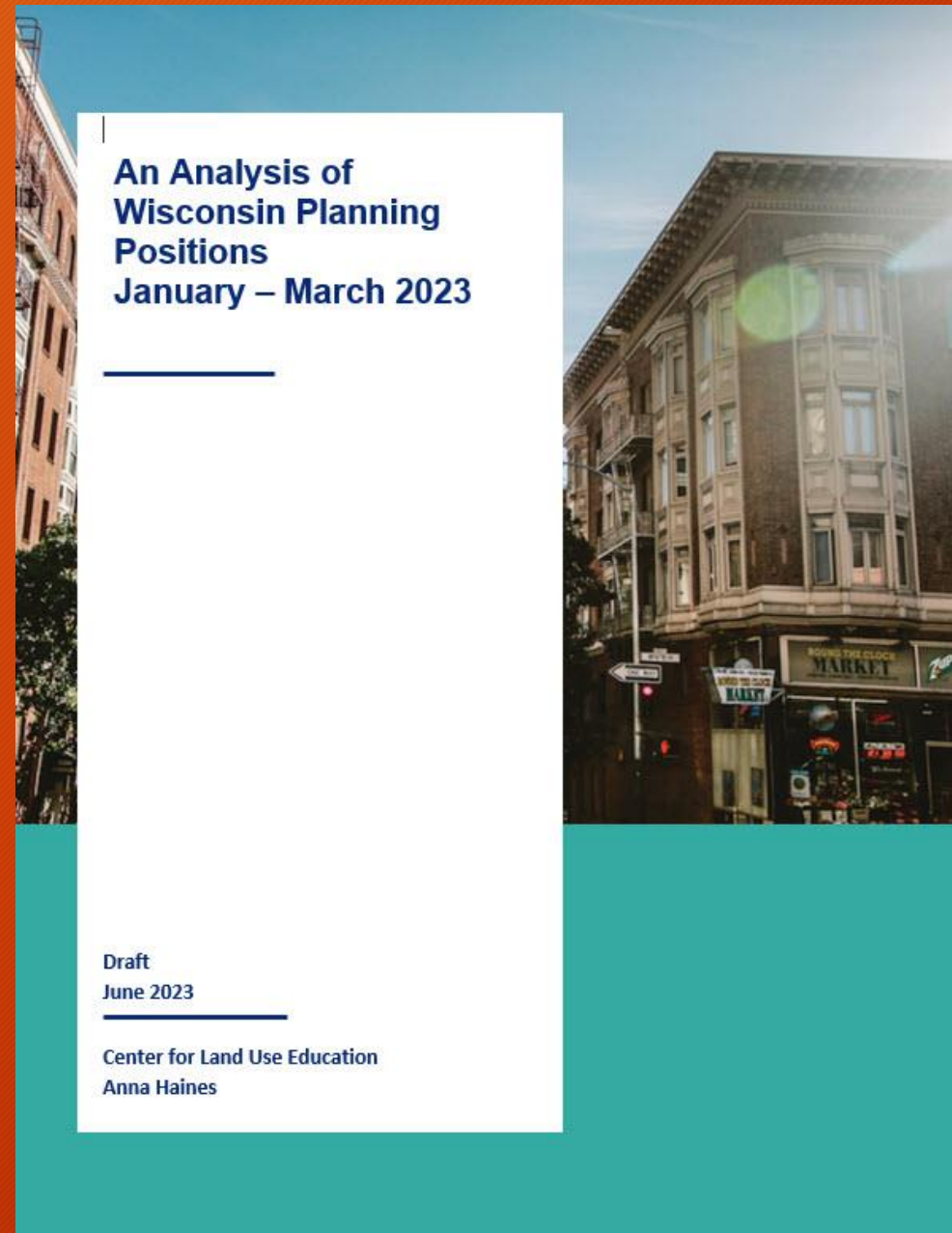
## Plan commission/Zoning Committee workshop

- November 29 - Sawyer County focused on CUPs and rezones



# New pub

- Written by Anna Haines based on 25 planning positions
- Intended to inform planning employers and students about the current needs that are reflected in planning job descriptions
- Summarizes desired
  - Education
  - Knowledge
  - Skills: permitting & codes, communication, etc.
- Posted on the CLUE website

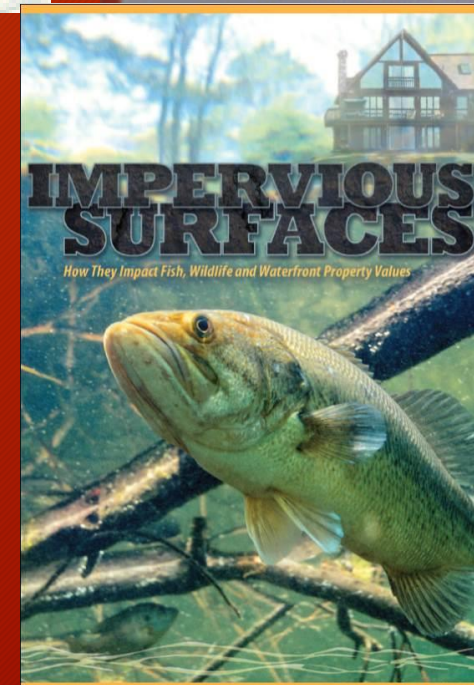
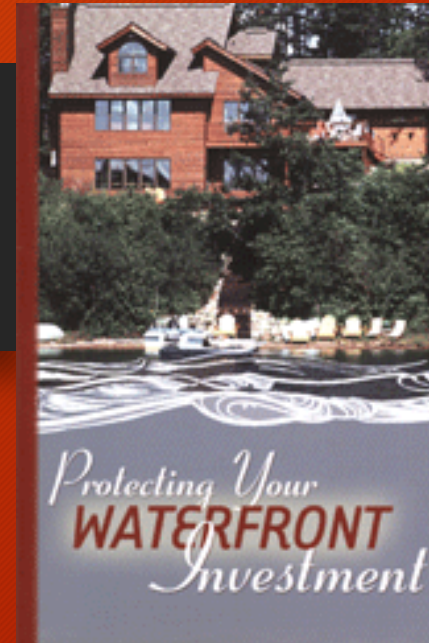
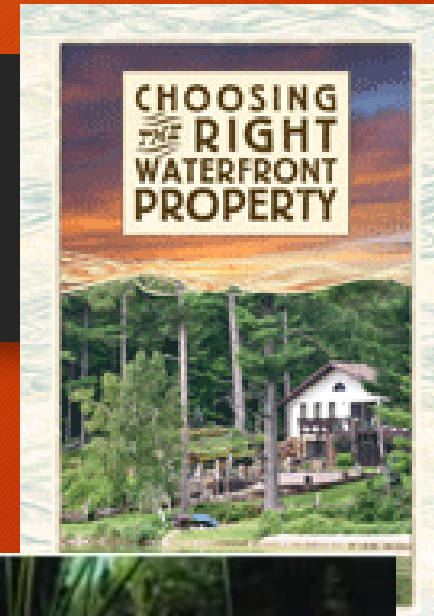


# Shift in Lynn's focus

Not doing shoreland zoning education for the next two years

Shoreland pubs will likely run out this year

Shifting to renewable energy





# Overlay maps for utility-scale solar

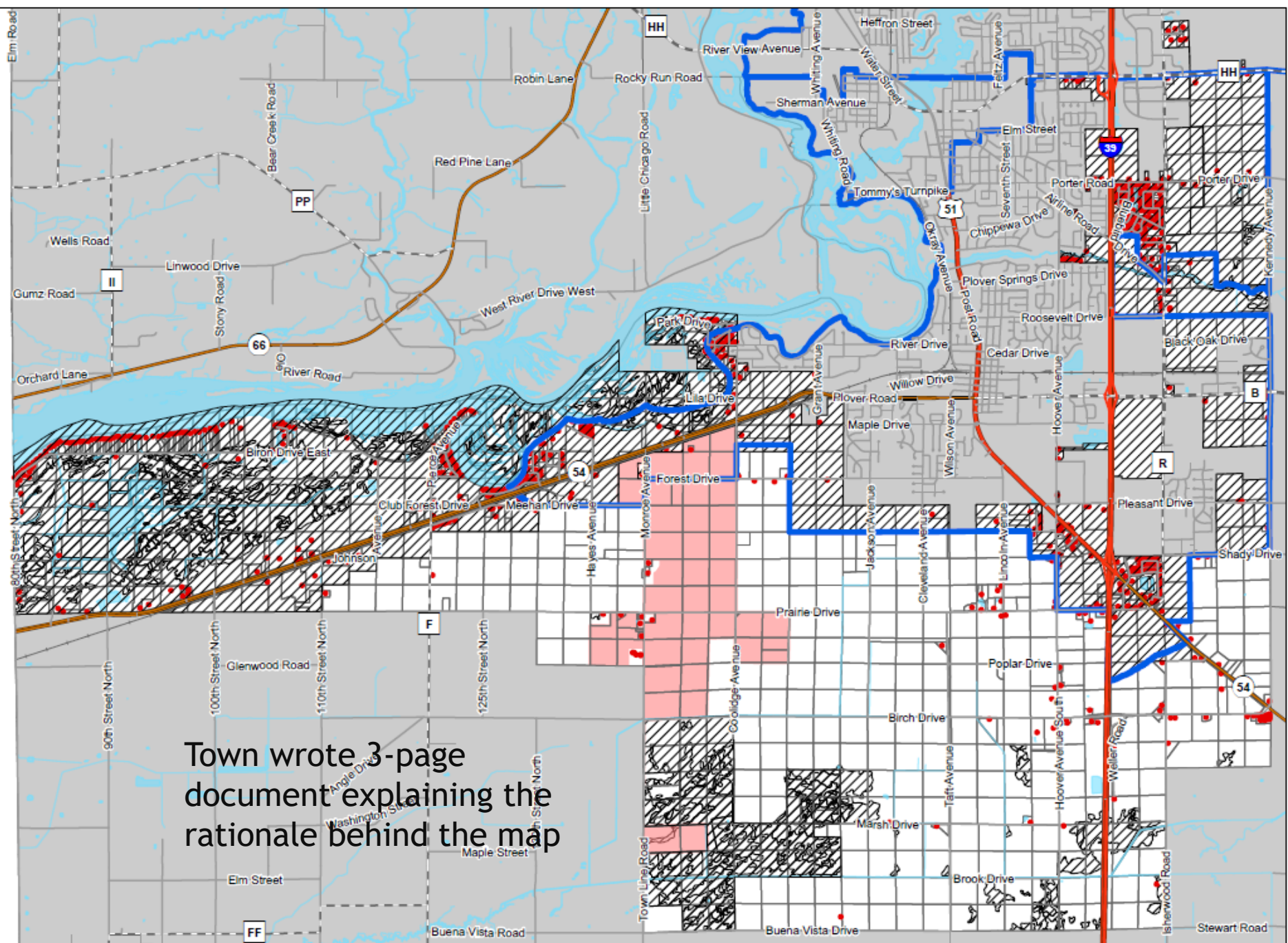
- Wisconsin Public Service Commission decides on location and size for solar farms over 100 MW
- Local governments may be able to influence solar developers and PSC if they create a solar overlay map with rationale
- *PSC must determine:*
  - Does the proposed project unreasonably interfere with the orderly land use and development plans for the area?*(Wis. Stats. 196.491(3)(d)6)



100 MW in Minnesota ~700 acres



Map 8.2A  
 Future Land Use Regarding  
 Solar Projects 100 MW or Greater



- Areas Excluded From Solar Energy Projects
- Potential Future Solar Area
- Sewer Service Area Boundary
- Existing Solar Project Boundary
- Structure Locations



Source: Town of Plover (2023)  
 Portage County Planning & Zoning (2023)

Adopted:

**Town of Plover  
 Comprehensive Plan**



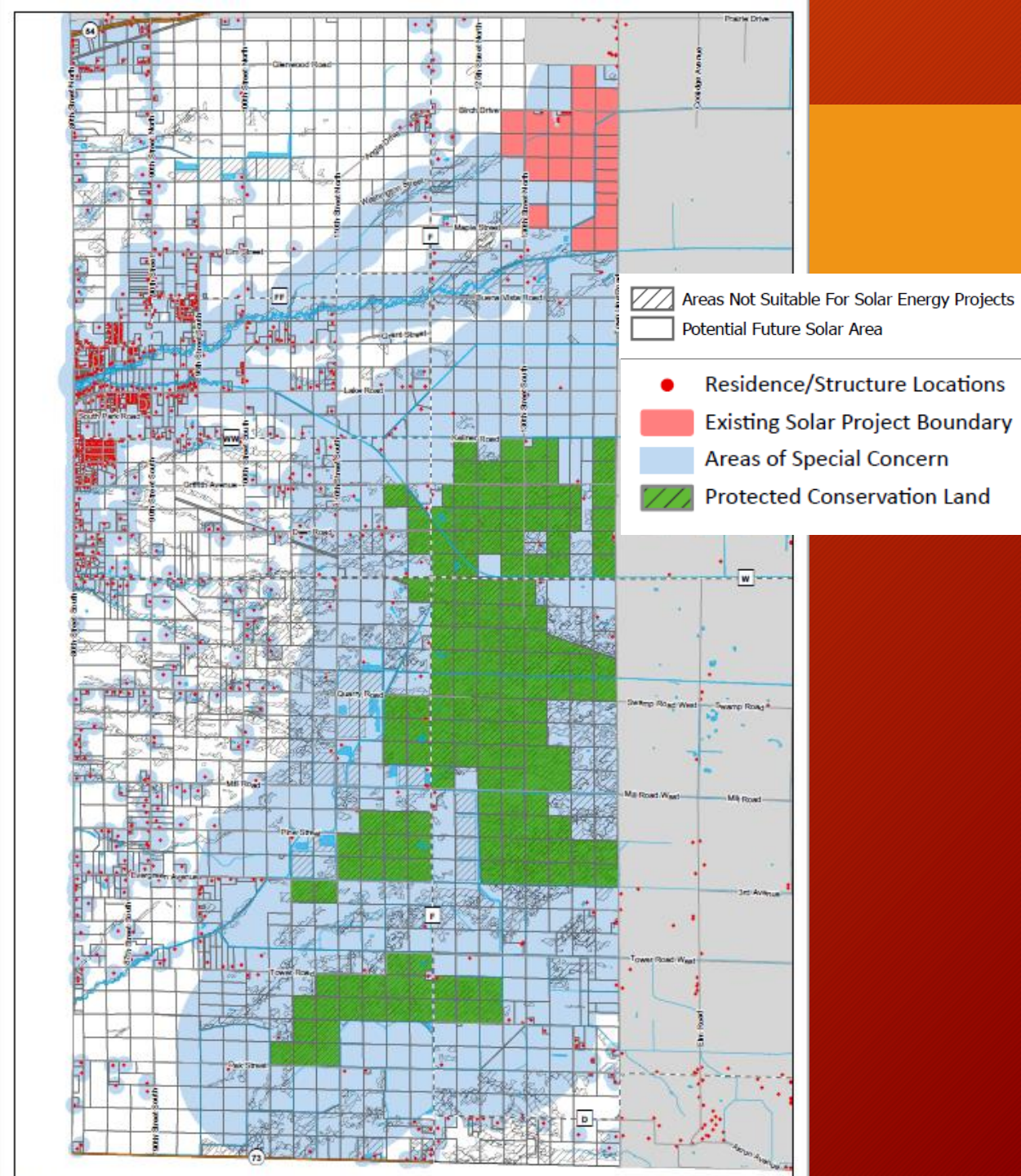
Portage County  
 Planning & Zoning  
 1462 Strongs Ave.  
 Stevens Point, WI 54481

Town wrote 3-page document explaining the rationale behind the map



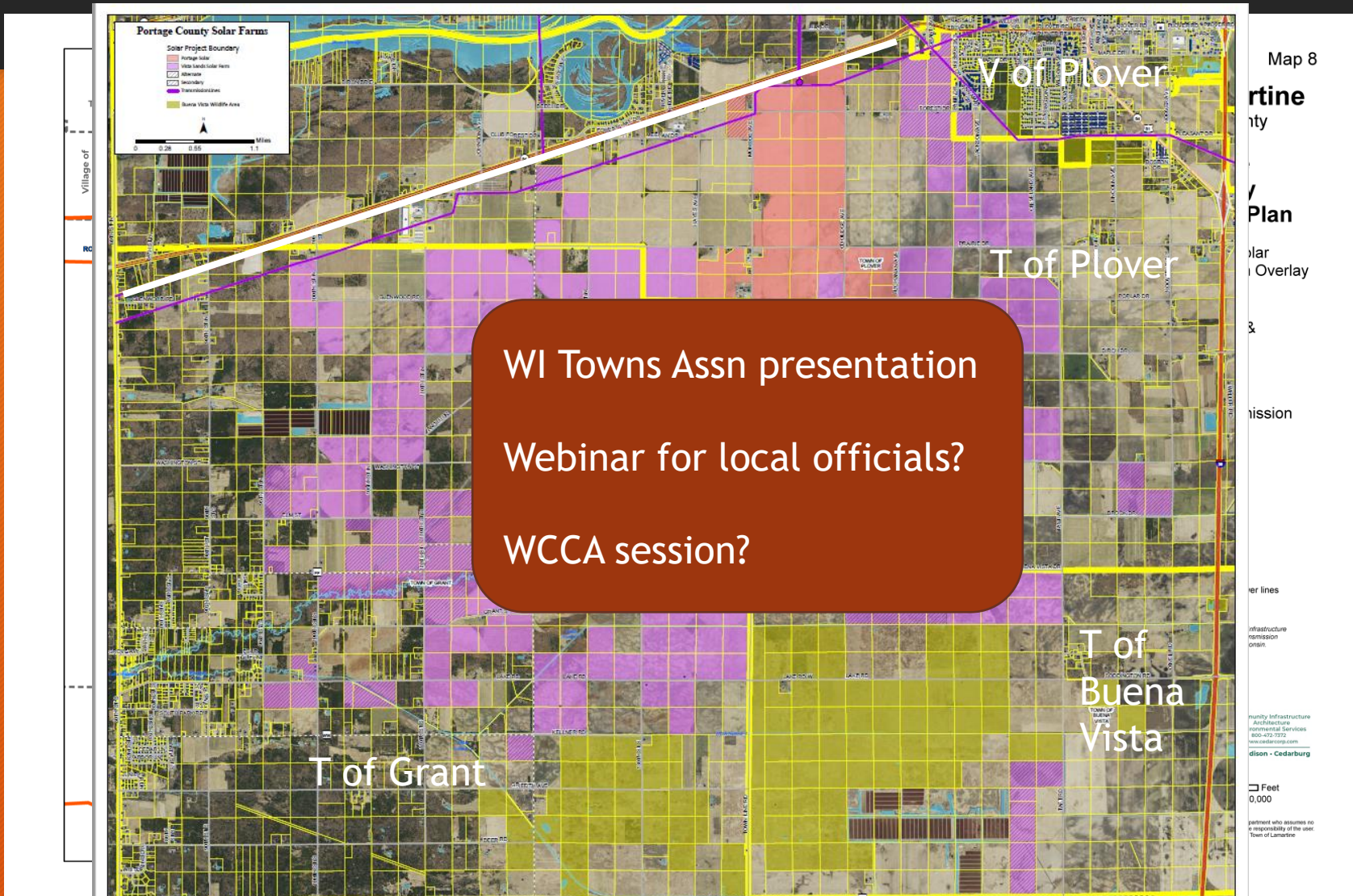
# Town of Grant, Portage County

- Town created opportunities for residents to comment and learn about solar permitting laws & process
- Town adopted a single map and rationale as an amendment to their comp plan to guide location of solar
  - Based on science of threatened species - grassland birds
  - To protect trout streams & wildlife corridors
  - To define types of fencing
  - To define vegetative buffers next to non-participating residences
  - Not 30 people with 30 different ideas
- Solar developer says they're listening to both towns and has made adjustments to where the solar project will be located
- What weight will PSC give to the towns' maps?





# T. Lamartine, Fond du Lac Co. - Solar Suitability Map



WI Towns Assn presentation  
Webinar for local officials?  
WCCA session?

Do you have high voltage transmission lines in county GIS and on public maps?

Unused capacity of lines?

Developer said unused capacity of existing line would accommodate 9,100 acres of solar (purple)

County or towns developing solar overlay maps?



# Thanks!

## Questions or comments?

- Lynn Markham
- [lmarkham@uwsp.edu](mailto:lmarkham@uwsp.edu)
- 715.346.3879