

RE: Campgrounds & R.V. Sites

Basic requirements for the establishment and additions to campgrounds with the installation of plumbing.

Per s. Comm. 82.20(1), State level plan review and approval by the Dept of Commerce is required for all campgrounds regardless of the number of sites or sites added to an existing campground that will include water and/or waste connections. Plan review is required for the installation of a dump station(s). Plan review is required for the shower/service buildings for new campgrounds, or additions of 16 fixtures.

Per s. Comm. 83.07(1)(b), State level plan review and approval by the Dept of Commerce is required for the POWTS serving a campground.

Requirements for:

Building sewer. See Comm. 82.30;

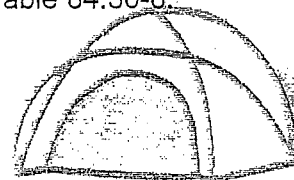
1. Minimum 4" size open site trap for each site.
 - a. Maximum 2 camping units per trap with an increaser to accommodate two drains.
2. Load equals 6 DFU's per trap.
3. No vents required.
4. Site drain must terminate 4" above finished grade.
5. Site drain must be capped when not in use.
6. Materials for sewer per Comm. 84.20 Table 84.20-3.

Water supply. See Comm. 82.40;

1. Minimum ~~10~~ **15 PSI** at all outlets/hose bibbs.
2. Each hose bibb equal to 4 WSFU (sizing per Comm. 82.40).
3. Each hose bibb to have approved backflow protection.
4. Water pipe risers shall have frost sleeves.
5. Materials for the water system per Comm. Table 84.30-8.

Dump stations. See Comm. 82.37;

1. Minimum 4" drain size.
2. Self-closing lid.
3. Minimum 6' diameter sloped concrete pad.
4. Water backflow protection and signage.



Shower/service building(s);

1. Drain, waste, vent, and water distribution per all applicable plumbing codes.
2. Fixture requirements per all applicable ADA and Health codes.

POWTS. See Comm.83;

1. New system plan review and approval by the Dept. of Commerce.
2. System plan review required for additions to the campground by the Dept. of Commerce.
3. County issued sanitary permit.

These plumbing installations shall be done by a properly licensed Plumber, with the Master being responsible, as required in Chapter 145.06(1) and (2) Wisconsin Statutes.

If you have any questions regarding this matter, please feel free to contact me at the number listed below.

DON HOUGH
PLUMBING CONSULTANT
BUREAU OF FIELD OPERATIONS
DIVISION OF SAFETY AND BUILDINGS

CAMPGROUNDS, RV SITES & SANITARY DUMP STATION

Plan Review Required Regardless Of Number Of Sites Added

Private Interceptor Main Sewer And Water Main SEWER

- Materials for sewers shall be the same as for building sewers.
- Service buildings, bathhouses, etc. may connect to 4" and larger Private Interceptor Main Sewer.
- Minimum size 4" trap, open site drain for each Site.
- Maximum two Sites per trap with an increaser to accomodate two drains.
- Load equals 6 DFU's per trap.
- No vents required.
- Site drain must terminate 4" above finished grade with a frost sleeve.
- Site drain must be capped when not in use.
- Frost sleeves are required on cleanout risers.
- Cleanouts located in areas subject to vehicular traffic shall terminate in a concrete pad.

WATER

- Materials for water are the same as approved for *water service*.
- Minimum 15 PSI required at each hose connection.
- Approved cross connection control shall be installed at each hose connection.
- Each hose connection equals a load of 4 WSFU.
- Water pipe risers shall have frost sleeves.

SANITARY DUMP STATION (Serving Recreational Vechicles)

- Slope concrete pad to receptor opening.
- Minimum 4" drain.
- Trap required.
- No vent required for trap.
- Self closing lid on receptor.
- Frost sleeve on sewer and water risers.
- Approved cross connection control shall be provided on the water outlet.
- Water outlet to have sign stating; "This water to be used for flushing and cleaning only. Do not drink this water!"

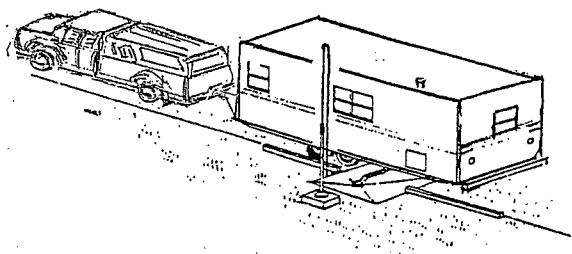
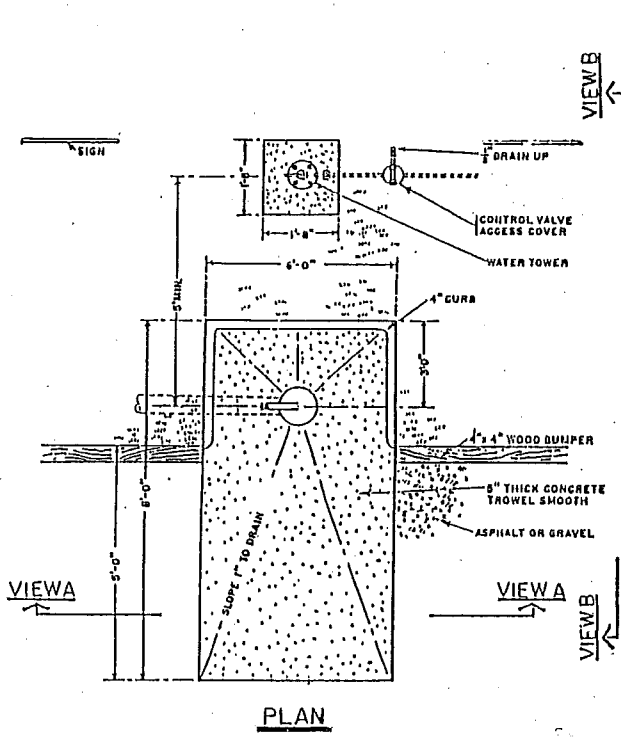
SANITARY DUMP STATIONS

Reference: Comm 82.37(2)

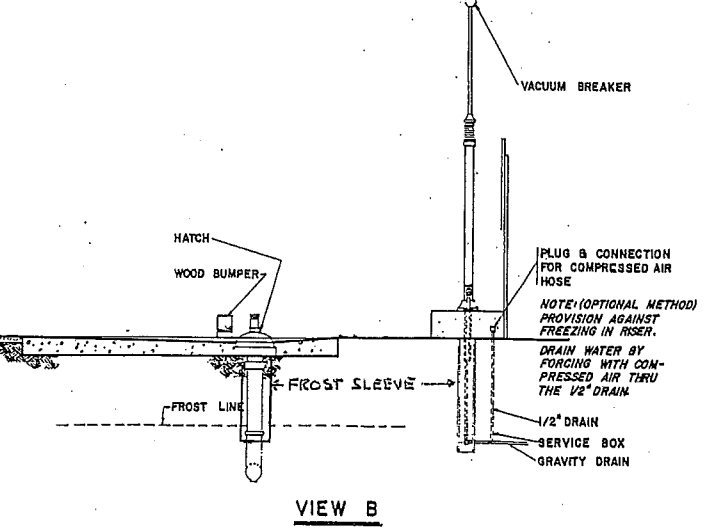
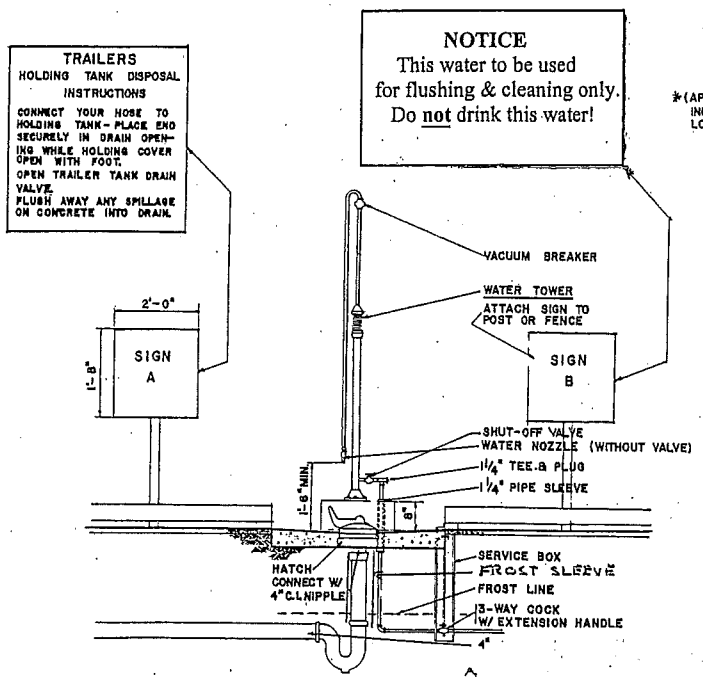
MATERIALS

Reference: Comm 84.10

(DRAWING "NOT TO SCALE")



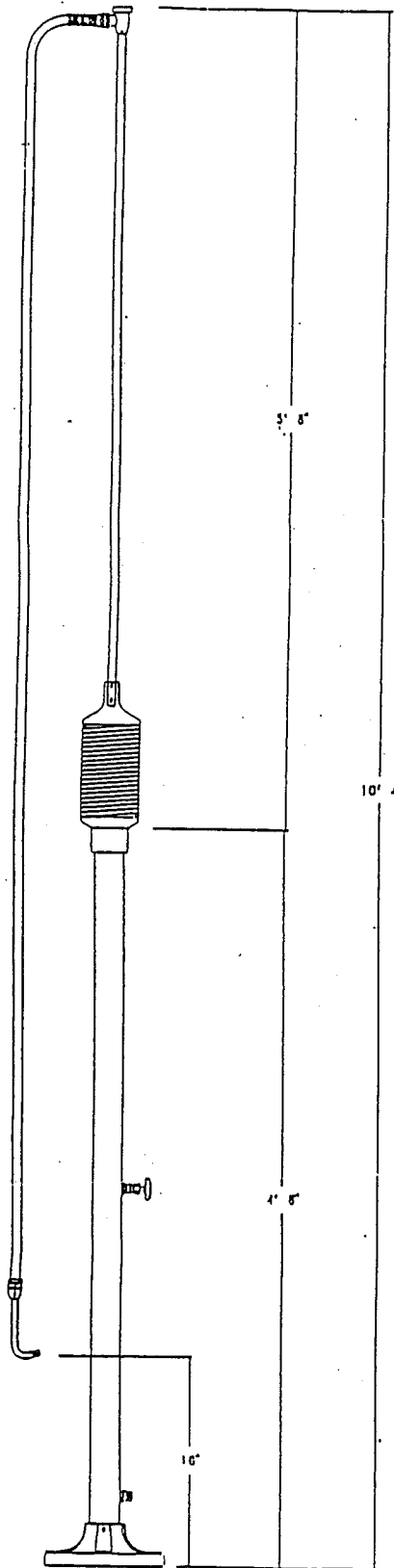
Plan View of Sanitary Station



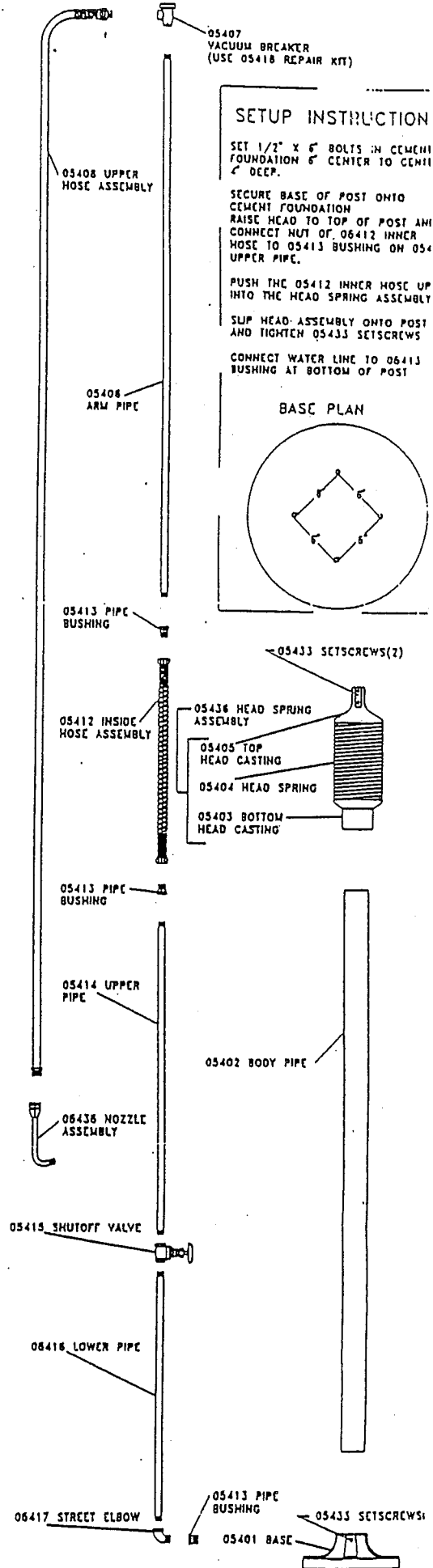
Sectional Views of Sanitary Station

P.O. BOX 1958
 MANITOWOC, WI 54221-1958
 PHONE 920-682-8091 OR
 800-945-1532 FAX 920-682-8094

Romort 05400 WATER TOWER



SANITARY HATCH COVER



SETUP INSTRUCTION

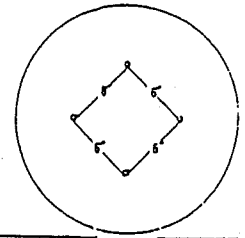
SET 1/2" X 6" BOLTS IN CEMENT FOUNDATION 6" CENTER TO CENTER 4" DEEP.

SECURE BASE OF POST ONTO CEMENT FOUNDATION
 RAISE HEAD TO TOP OF POST AND CONNECT NUT OF 06412 INNER HOSE TO 05413 BUSHING ON 05408 UPPER PIPE.

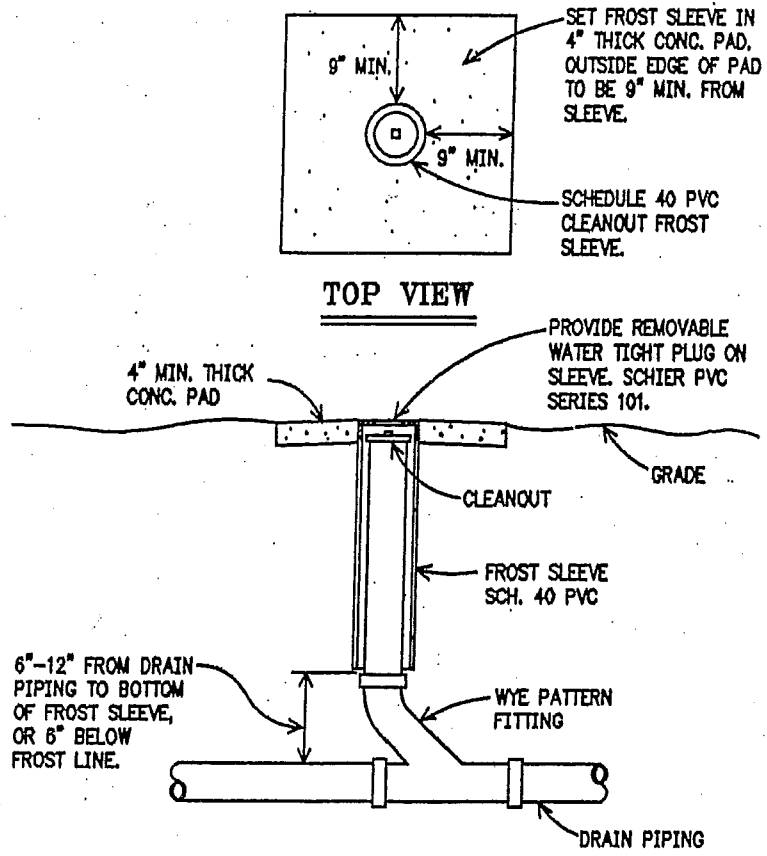
PUSH THE 05412 INNER HOSE UP INTO THE HEAD SPRUNG ASSEMBLY
 SLIP HEAD ASSEMBLY ONTO POST AND TIGHTEN 05433 SETSCREWS

CONNECT WATER LINE TO 06413 BUSHING AT BOTTOM OF POST

BASIC PLAN

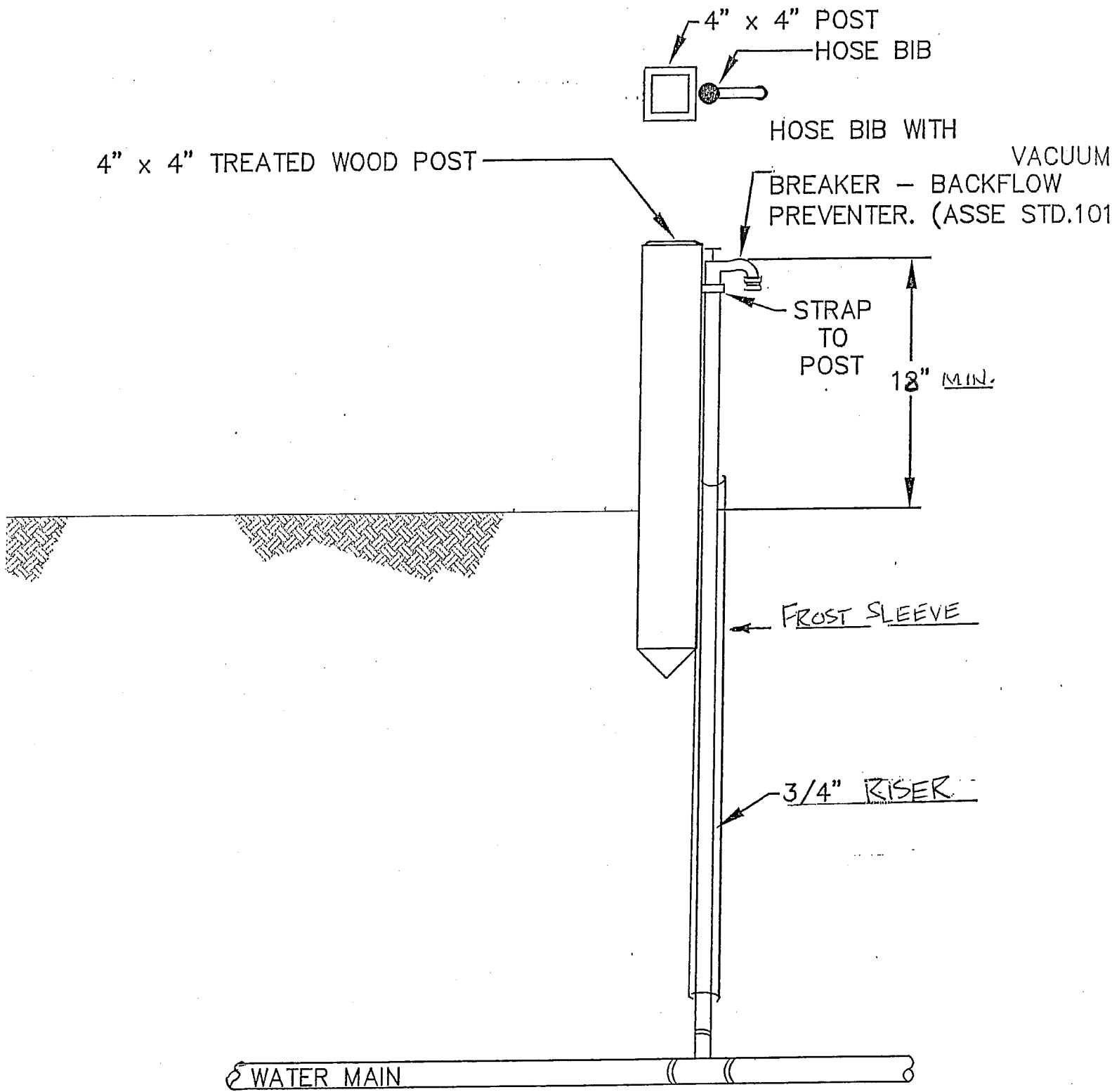


05433 SETSCREWS(2)



CLEANOUT DETAIL
 NO SCALE (EXTERIOR)

(Located In Traffic Areas)



WATER LATERAL RISER DETAIL