

# County Planning Roundtable: Lessons from the Field

- **Presenters:**
- *Ruth Hulstrom – Bayfield County*
- *Chris Meuer – Calumet County*
- *Sarah Van Buren – Fond du Lac County*
- *Sam Wessel – North Central Wisconsin Regional Planning Commission (NCWRPC)*

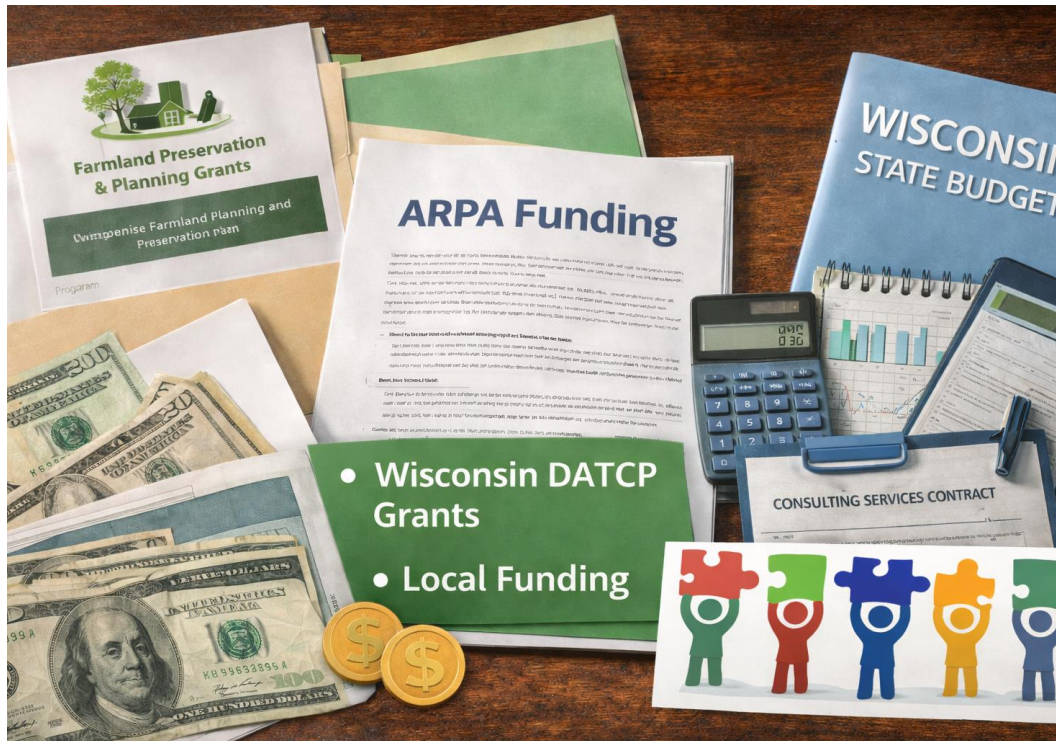


# The Planning Process



- What triggered your most recent comprehensive plan or farmland preservation plan update?
- How did you structure your planning committee? (staff-led, consultant-led, hybrid?)
- What part of the planning process took longer than expected?
- Do you feel that your farmland preservation plan meaningfully influenced your comprehensive plan and vice versa?

# Funding and Resources



- What funding sources did you rely on? (state grants, levy, etc.)
- Did funding constraints shape the scope of your plan?
- Was hiring a consultant worth it? Why or why not?
- What would you do differently to stretch limited planning dollars?
- Did you align plan updates with grant cycles or DATCP certification timelines?

# Public Outreach and Engagement



- What outreach method produced the most meaningful feedback?
- Did you do any targeted marketing for your plan, and was it successful?
- Did you rely more on in-person meetings, surveys, or digital engagement tools?
- How did you handle controversial topics, like rural density, solar or wind development, or differences in opinions between municipalities?
- What didn't work?

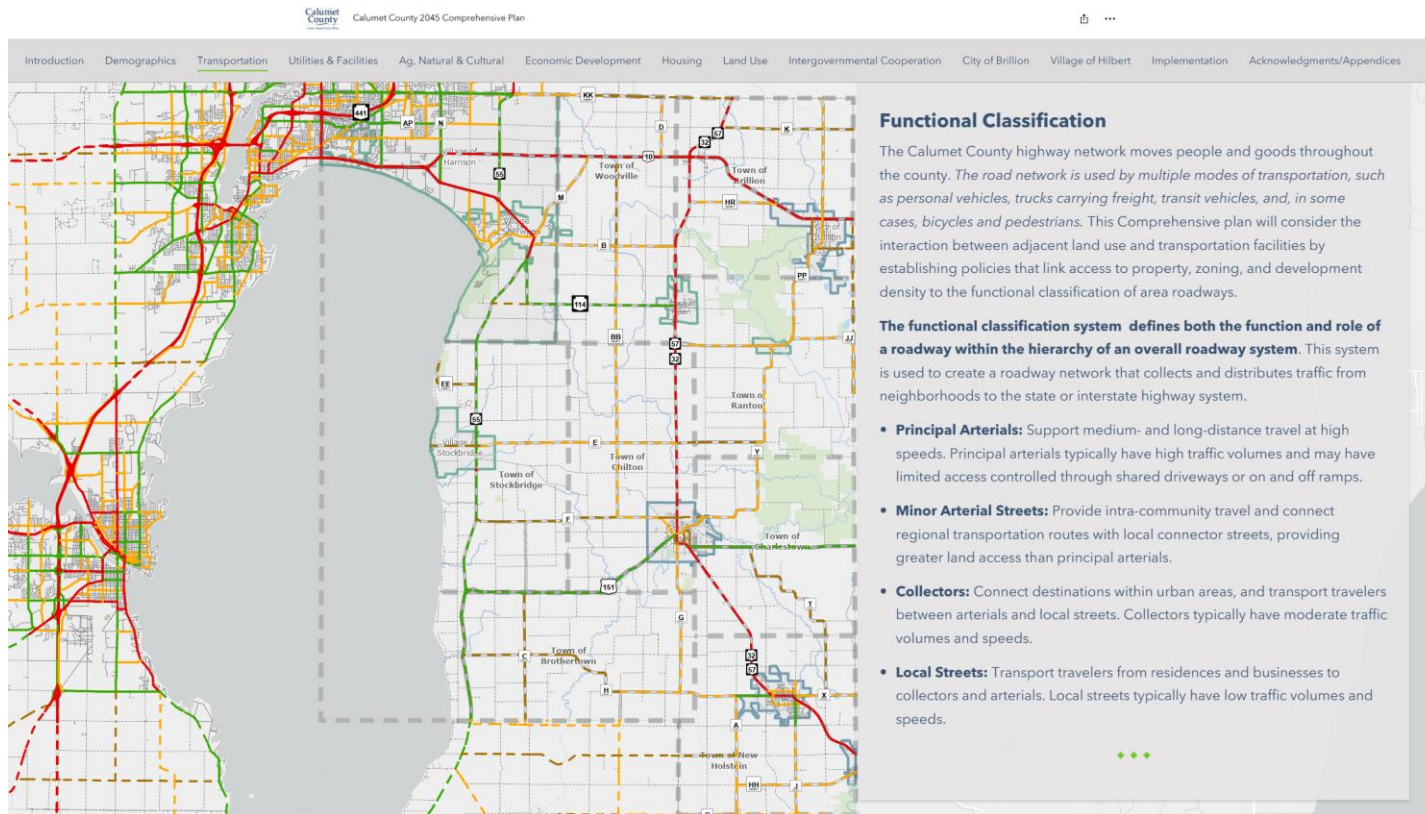


# Beyond the Required Plan Elements



- What optional elements did you include that proved valuable?
  - Housing studies?
  - Economic development strategies?
  - Infrastructure planning?
  - Climate resilience?
- Did you integrate GIS-based land evaluation models?
- Did you include implementation matrices tied to staff workload?
- How do you use the plan in day-to-day zoning decisions?

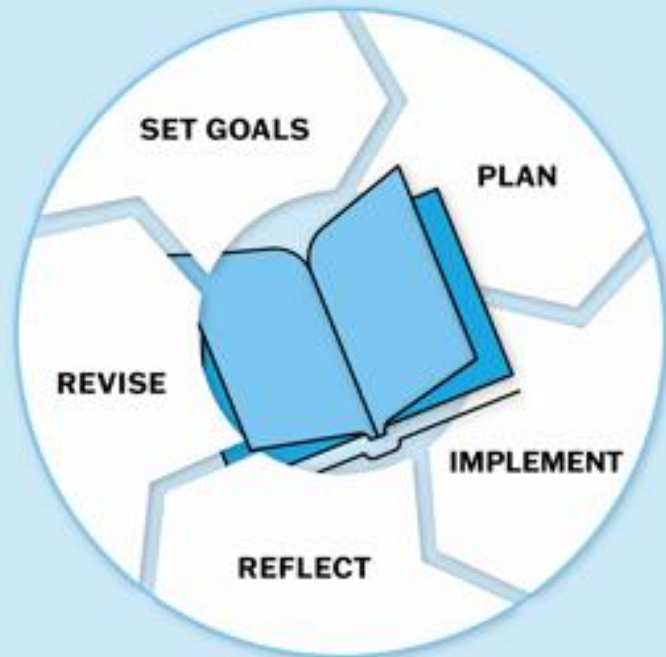
# Media Format and Accessibility



- Is your plan:
  - PDF only?
  - Interactive digital platform?
  - GIS-Integrated?
- How often do staff actually use the plan?
- Are your plan mapping elements accessible online in a usable format?
- Did you build internal dashboards or tracking tools tied to implementation?
- If you could redesign your plan format today, what would you change?

---

# Implementation and Reality Check



- 
- What are you doing to keep your plan relevant between updates?
  - Are 10-year updates frequent enough?
  - If you were starting your comprehensive or farmland preservation plan over tomorrow, what is one thing you would absolutely do differently?